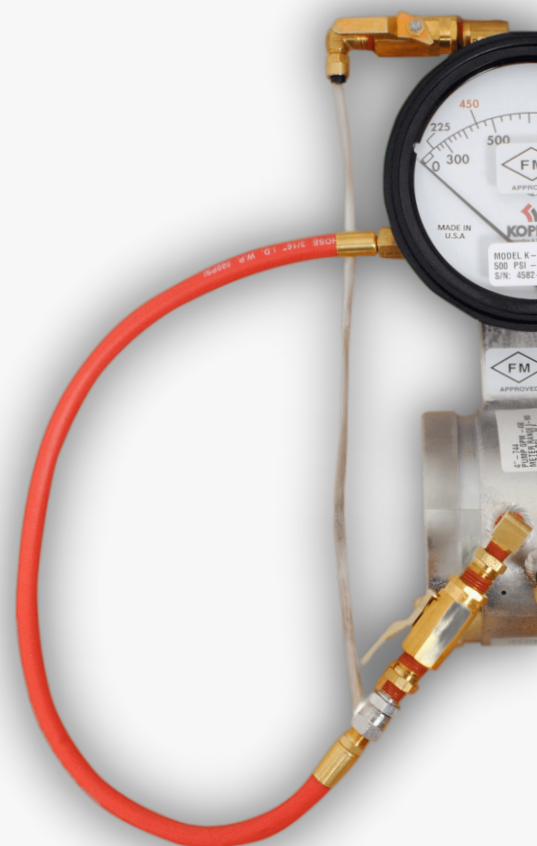


KOPLER®
Innovation & Technology

FIRE PROTECTION PRODUCTS





FIRE PROTECTION PRODUCTS

OS&Y Gate Valve



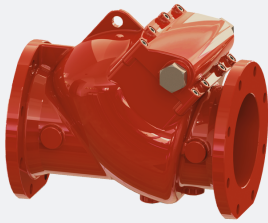
K-801-R
Ductile Iron
2" to 12"
300 Psi
Flanged Ends

NRS Gate Valve



K-811-P
Ductile Iron
4" to 12"
300 Psi
Flanged Ends

Swing Check Valve



K-823-A
Ductile Iron
2" to 12"
350 Psi
Flanged Ends

Butterfly Valve



K-830-B
Ductile Iron
2" to 12"
300 Psi
Grooved Ends

Post Indicator



K-601-IP
Carbon Steel
Adjustable
4" to 12"
Vertical Type

Fire Hydrant



K-401-D
Ductile Iron
250 Psi
6" Flanged Shoe

Y-Strainer



K-901-U
Cast Iron
2½" to 12"
175 Psi
Flanged Ends

Valve Box



K-4908
Ductile Iron
5¼"
2-Piece
Sliding Type

Pressure Reducing Valve



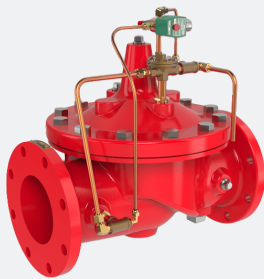
90-21
Ductile Iron
1 1/2" to 8"
250 psi or 300 psi
Globe or Angle

Pressure Relief Valve



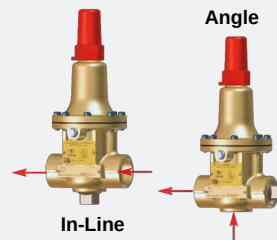
2050B-4KG1
Ductile Iron
3" to 8"
250 psi or 300 psi
Globe or Angle

Deluge Valve



134-05
Ductile Iron
3" to 12"
Class 150 & 300
Flanged & Grooved Ends

Pump Casing Relief Valve



55L-60
Cast Bronze
1/2", 3/4", 1"
400 psi
Threaded Ends

Air Release Valve



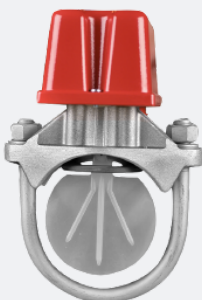
Series 34
Ductile Iron
1/2", 3/4", 1"
175 psi or 300 psi
Threaded Ends

Fire Pump Test Meter



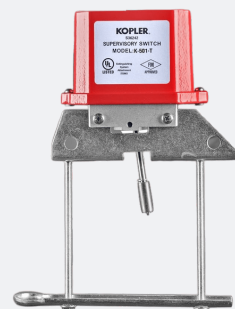
Model-K
Venturi Type
2" to 12"
500 psi
Grooved Ends

Waterflow Switch



K-511-V
Vane Type
2" to 8"
450 psi
Two SPDT switches

Supervisory Switch



K-501-T
For OS&Y gate valve
2" to 12"
Indoor or Outdoor
One SPDT switch



KOPLER LLC
501 Silverside Rd, Ste 105 4029
Wilmington, DE 19809 United States of America
Tel: 1(646) 781-8002 , Fax: 1(646) 781-8003
Email: info@kopler.com
Website: www.kopler.com

